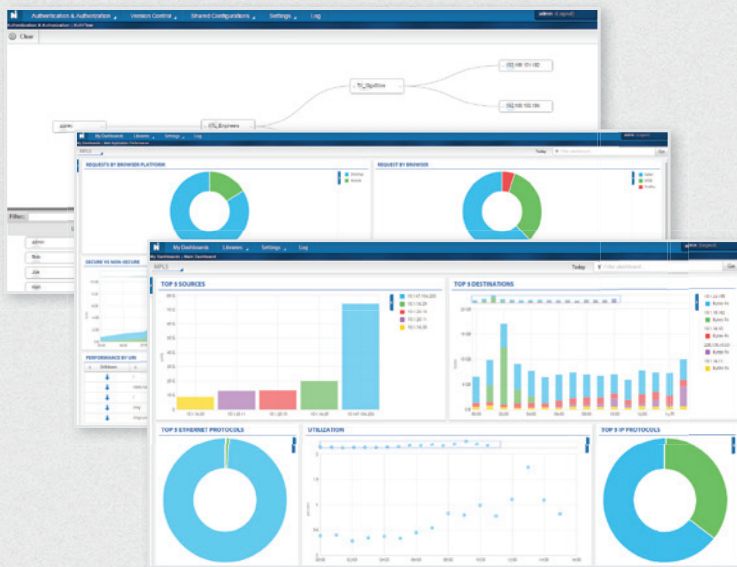


OBSERVER

PERFORMANCE MANAGEMENT

PLATFORM

Version 17 Guide



TOTAL NETWORK PERFORMANCE MANAGEMENT

- Intuitive User Interface
- Expanded Workflows & Analysis
- Enhanced Web Service Analytics
- Third-Party Integration
- Version Control Management
- Expanded Event and Audit Logging

The new Observer® Performance Management Platform is a comprehensive solution designed to give you more power and control over your network, applications, and services. The features available in this release facilitate a deeper understanding of every transaction down to the packet level, so root cause can be identified, and issues quickly resolved.

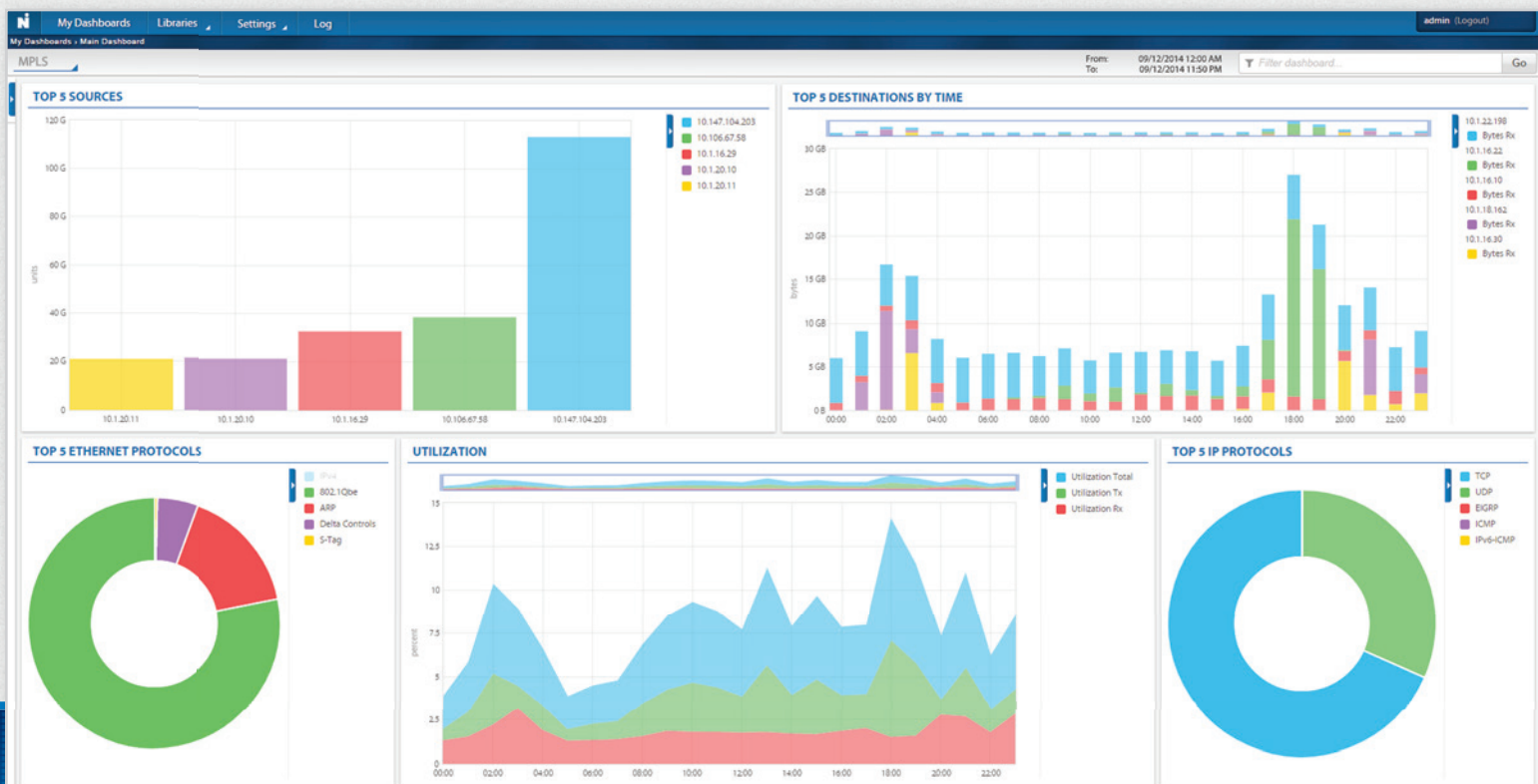
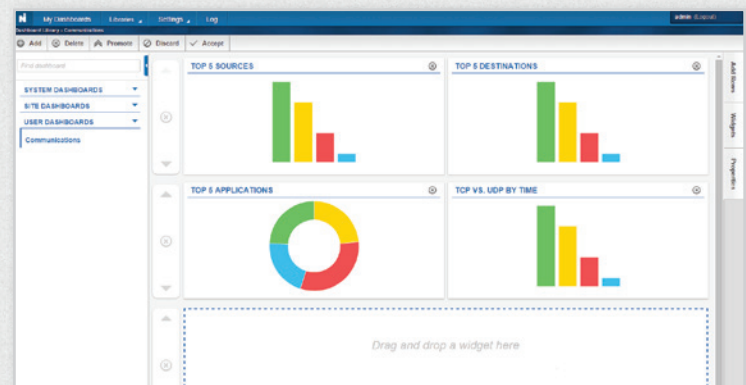
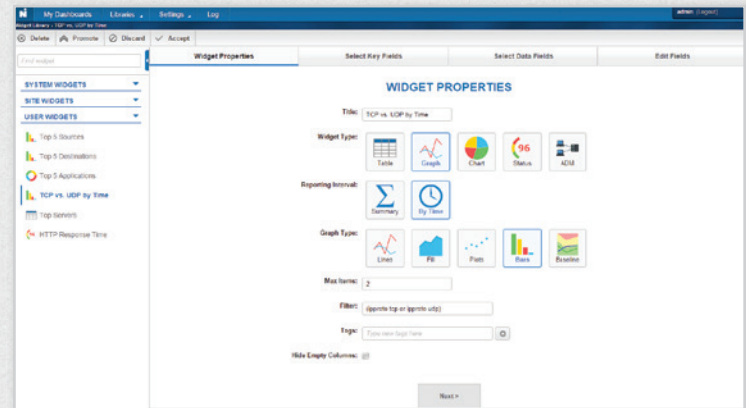
AN INTUITIVE USER INTERFACE

OBSERVER APEX

Formerly Observer Reporting Server (ORS)

Combine all your operational metrics in one place with dashboards that get you up and running fast.

- Populate pre-defined dashboards and reports with data Observer Analyzer collects from Observer Probes, or Observer GigaStor™ appliances located throughout the network
- Easily create your own customized dashboards and reports with the widget creation tool
- Share findings with other business units in a way that is digestible and easy to understand, using graphs, charts, and more
- Correlate errors and response time with HTTP traffic metrics that include details on browser type and operating system (OS)



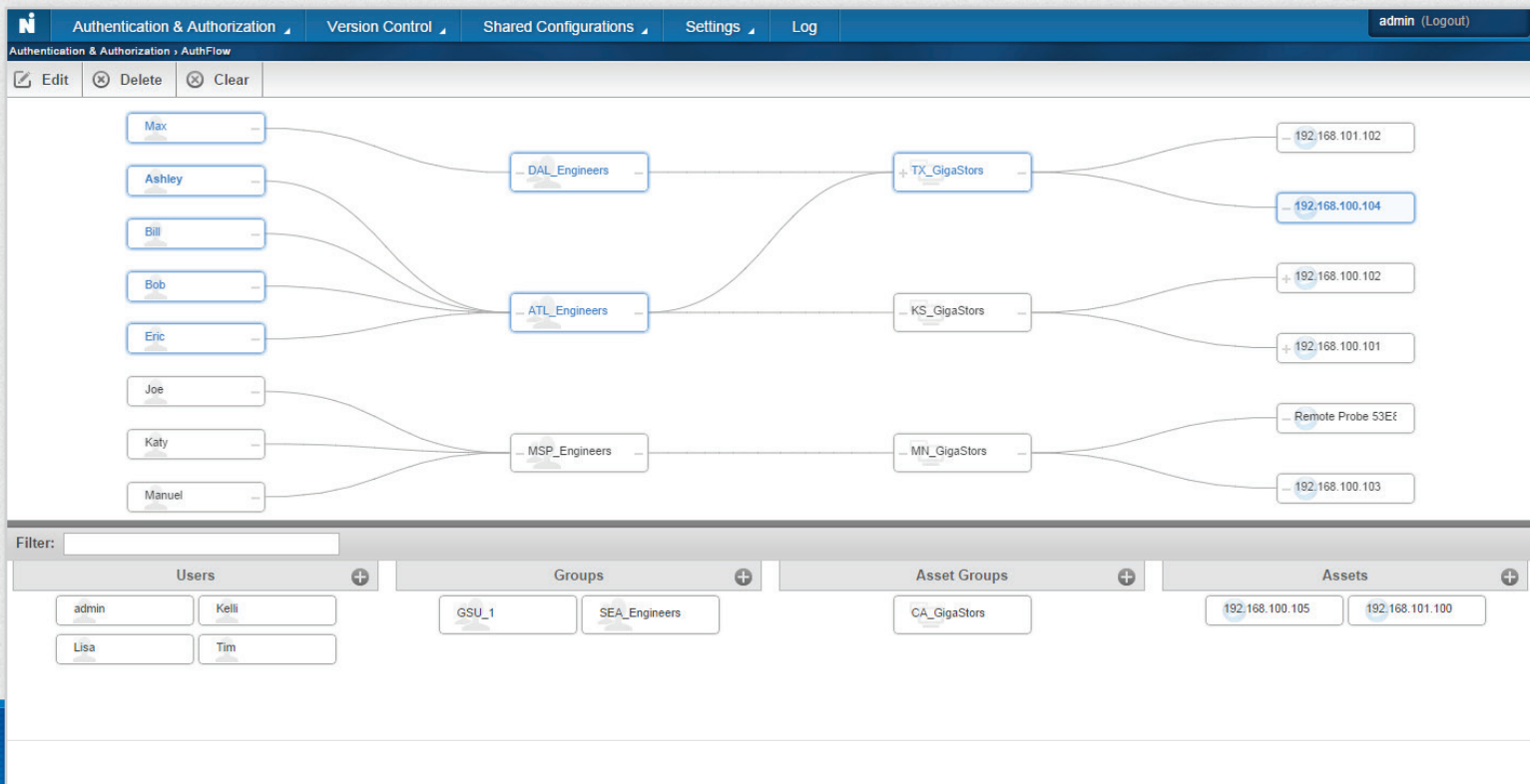
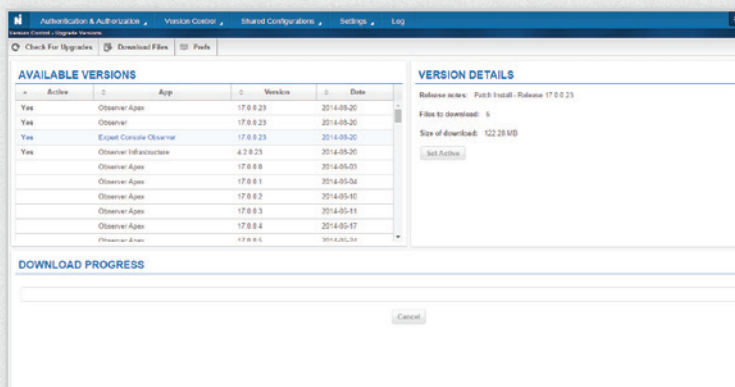
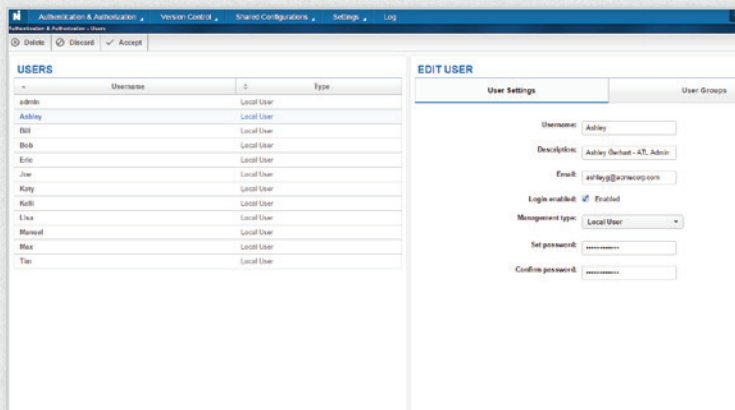
The newly designed, intuitive user interface (UI) takes ease-of-use to the next level, enabling better configuration, management, and reporting. Both Observer Apex™ and Observer Management Server (OMS) feature a user-friendly, HTML5 interface with the same easy-to-use drag-and-drop, right click, and scrolling capabilities you'd expect from any web-based application. The result is a lower learning curve, improved assessment time, and the ability to quickly react to network issues.

OBSERVER MANAGEMENT SERVER

Formerly Network Instruments Management Server (NIMS)

Authenticate user access and passwords, administer upgrades, and streamline management from a single, centralized location.

- Support larger deployments with centralized authentication, authorization, and auditing (AAA)
- Manage AAA to all of your network assets with drag-and-drop functionality on an easy, highly visual control interface
- Add, change, or delete users with a click of the mouse
- Safeguard sensitive user data while in transit with TLS-based communication security



WHAT ELSE IS NEW?

Expanded Workflows & Analysis

Greater access to transaction-level detail improves network team knowledge of applications. By restructuring the way data is organized and presented, it's easier to visualize the flow and execution of the various application tiers as users consume IT services.

Available with [Apex](#)



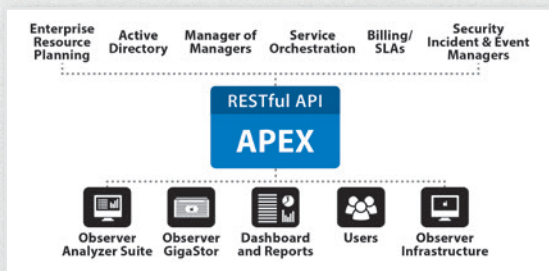
Benefits

- Gain better understanding of how users interact with servers/services
- Assess and accurately troubleshoot performance
- Better optimize service performance
- Locate and eliminate service bottlenecks

Third-Party Integration

A RESTful API enables the easy sharing and management of performance data with complementary IT initiatives like event management or service orchestration. All configuration, management, and data within Apex and OMS can be accessed, controlled, or modified externally in an automated fashion. This functionality facilitates the sharing of data and performance intelligence with other groups or workflows, and brings all of your performance management tools together.

Available with [Apex](#) and [OMS](#)



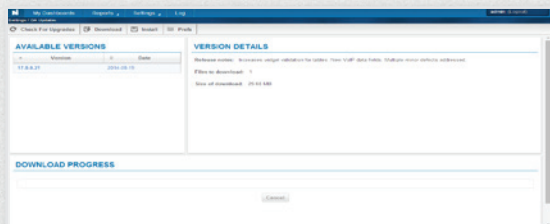
Benefits

- Easily integrates performance monitoring into business and IT processes
- Simplifies sharing of performance data with non-network teams
- Automates and integrates monitoring with other technologies and initiatives like service orchestration for Cloud, SDN, and virtual deployments

Enhanced Web Service Analytics

When it comes to how effectively your web-based apps and services are running, the customer is always right. For complete service assurance, you need the fine-grained, end-user operating parameters that the Observer Platform can provide. From client device response time to browser type, and even OS, get granular views into actual systems and applications. HTTP traffic metrics include details on browser type and OS, as well as the ability to correlate this information with response times, errors, and more.

Available with [Apex](#) and [Analyzer](#)



Version Control Management

Check for and download all Observer Platform updates and version releases quickly and easily from within the Observer product interface. Improved version control management saves time and allows you to access all new features and functions as they become available.

Available with [All Observer Platform Products](#)



JDSU Performance Management

North American Location

10701 Red Circle Dr. • Minnetonka, MN 55343 • USA
Toll Free: 800.526.7919 • Voice: 952.358.3800 • Fax: 952.358.3801

www.networkinstruments.com