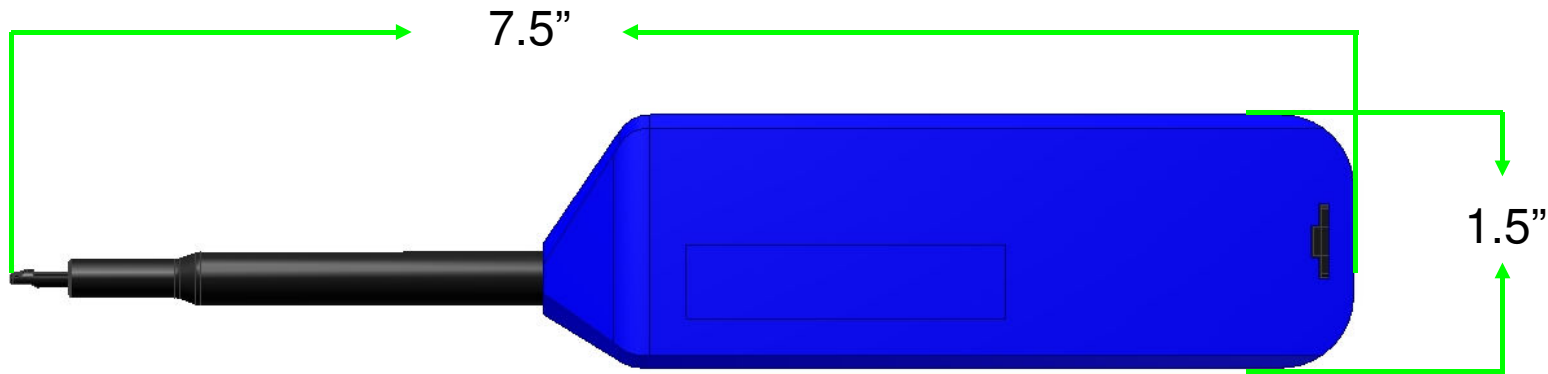
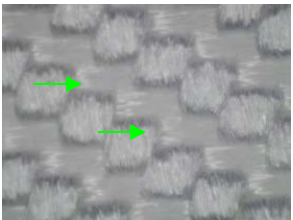


IBC™ Brand Cleaner M2500 Preview



Cleaning tape image

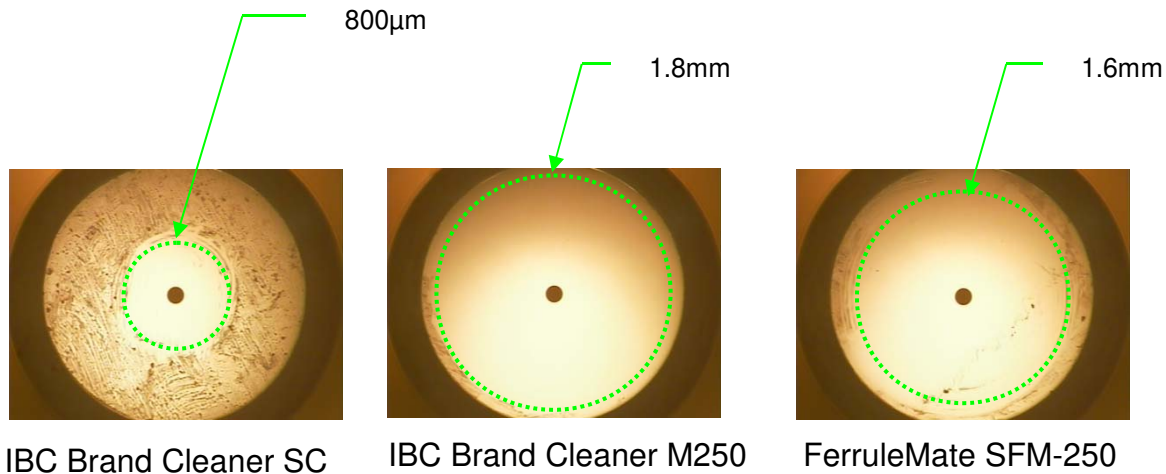


Rectangular weave pattern

Notes:

- USC will continue to support the current IBC Brand Cleaner SC tool after the release of the IBC Brand Cleaner M250 tool
- Uses a cleaning tape similar to the IBC Brand Cleaner MPO tool
- The cleaning tape in the M250 has a slightly different micro woven fabric which has better absorbency
 - Instead of a standard square checker, the M250 fabric will have a rectangular weave pattern giving the material more surface contact
 - The fabric is slightly thicker than the MPO fabric which improves absorbency
- The cleaning tip will continue to rotate 180° and back for a full rotation during engagement
- The M250 will be smaller than the SG Ferrule Mate ($L = 9" \times H = 1.75"$) and have a more robust housing
- 500 to 600 cleanings per unit

IBC™ Brand Cleaner M250 Preview



M250 BENEFITS LIST:

- **Largest Cleaning Region:** The cleaning region will for M250 will 1.8mm to 2.0mm versus the 800µm of today's standard IBC Brand Cleaner SC tool
- **Improved Material Composition:** The cleaning medium for the M250 will be a 2.0mm tape with an improved polyester-nylon composition material – better absorbency and dust trapping properties
- **More Applications:** The M250 will feature a new alignment cap that allows this tool to clean SC, ST, FC, E2000, OptiTap, TFOCA II and other 2.5mm MIL spec & COTS based connector systems
- **New Feature:** We will be adding a magnet strip to the housing so the tool cap be left on steel racks and or cabinets