

RXT-6000e Module

Universal 100G Testing



Now supporting CFP2, CFP4, QSFP28, QSFP+, SFP28, SFP+ and SFP

RXT-1200

Modular Test Platform



Enhanced Universal Test Module for Carrier Ethernet, Backhaul & Transport Technologies

VeEX® RXT is the industry's most flexible, compact, and future-proof hand-held test solution for core, metro and access. The RXT-6000e module adds Ethernet, Mobile Backhaul, Storage Area Networks, OTN, SDH/SONET, PDH/T-Carrier links and services testing, from 1.5/2 Mbps up to 100 Gbps.



Platform Highlights

The RXT modular test platform offers a full range of link and service testing capabilities for a complete range of communication technologies, including OTN, SDH/SONET, PDH/DSn, Carrier Ethernet, SyncE, 1588v2 PTP, CPRI/OBSAI (DAS), Fibre Channel, OTDR, OSA, CaTV, QAM/DOCSIS. All supported by a single rugged hand-held test platform.

- Optional built-in GPS for One Way Delay (OWD) and Timing (Phase) measurement
- Optional built-in high-precision Atomic Clock reference
- Extended Sleep Mode (standby) with frequency and phase holdover
- Flexible Remote Access and Remote Control via ReVeal software, web browser, VNC® and SCPI commands
- Fast test results transfer via USB memory stick
- Built-in VeExpress client for asset management, software updates and licenses. Buy, rent or share licenses
- Built-in R300 Server client for test results upload
- Intuitive graphical user interface for easy operation
- 7" color LCD with touch screen
- Ultra high capacity field-exchangeable Li-ion battery pack offers over 1.5 hours of continuous operation at 100GE rate
- Smallest and lightest 100GE test platform, weighing 3 kg (6.7 lb) including its high-capacity Li-ion battery

100G Module Highlights

Equipped with dual next-generation optical transceiver ports and optional legacy test interfaces, the RXT-6000e module is a perfect complement to the RXT Platform, extending its testing range to 100 Gbps.

Installation, commissioning, monitoring and maintenance tasks are simplified thanks to a combination of intuitive features and powerful test functions. Novice users benefit from the easy-to-use GUI, while experienced users will appreciate an array of advanced features such as OTL/PCS, CAUI-4/XLAUI Lane BERT, overhead monitor/control, Tandem Connection Monitoring, Service Disruption, Protocol Capture/Decode, BERT, Throughput test, and much more.

General

- CFP2 (LR4 & SR10) and QSFP28 interfaces for 100GE, OTU4 and ready for 50GE* applications
- Supports IEEE 802.3bj Clause 91 RS-FEC as required for SR4 and SR10
- CFP4 support via CFP2-to-CFP4 adapter
- QSFP+ for 40GE, OTU3
- SFP28 interface for 25GE, 16G FC and 32G FC applications
- SFP+ for 100Base-FX, 1000Base-X, 10GBase-X, OTU2/2e/1e/1, STM-64/16/4/1/0, OC192/48/12/3/1, and Fibre Channel 1/2/4/8/10/16G applications
- RJ45 for 10/100/1000Base-T applications
- External clock interface
- 150 ppm clock offset generation
- Soft LED indicators and detailed Errors/Alarms summary

Module Highlights *cont'd*

Ethernet Testing

- Optical 100 Mbps to 100 Gbps Ethernet testing, including 25GE and 50GE*
- Electrical 10/100/1000 Mbps Ethernet testing
- Dual-port testing capabilities
- Optical Lane BERT and CAUI-4/XLAUI Lane BERT
- PCS Layer Testing with Skew generation/monitoring
- Multi-stream testing up to 32 independent streams
- IEEE 802.3ah, ITU-T Y.1731, IEEE 802.1ag, and MPLS-TP OAM support
- RS-FEC support for SR4 and SR10 transceivers
- Q in Q (VLAN stacking), MPLS, MPLS-TP, PBB, EoE support
- MAC flooding
- RFC2544 and V-SAM (Y.1564) testing
- IPv4 and IPv6 traffic generation
- BERT and Throughput testing at Layer 2 and Layer 3
- Smart Loopback mode for Layer 2 and Layer 3
- One-Way-Delay latency measurement (GPS assisted)
- Line rate packet capture with Wireshark™ decode
- Error and Alarm Injection

Fibre Channel

- Storage Area Networks (SAN) testing for 1G, 2G, 4G, 8G, 10G, 16G and 32G interfaces
- BERT and Throughput test
- RFC2544: Throughput, latency, frame loss, back to back tests Layer 1 and layer 2 loopbacks

OTN Testing

- OTN testing for OTU1, OTU2, OTU1e, OTU2e, OTU3 and OTU4
- Complete multi-stage Mapping/Multiplexing
- Advanced multi-step Map/Mux with SDH/SONET/PDH/DSn test payloads*
- Ethernet over OTN (EoOTN)
- ODUflex into ODU2, ODU3 and ODU4 with Bulk payload
- Service Disruption Time (SDT)
- Tandem Connection Monitoring
- Overhead monitoring and generation
- Terminate, Payload Through and Line Through test modes
- Per-lane optical power and frequency measurements
- External clock reference interface
- Histogram Analysis

SDH/SONET Testing

- Available as Line Rate or mapped into OTUK payload
- STM-0 to STM-64 and STS-1/OC-1 to OC-192
- Advanced multi-step Map/Mux with PDH/DSn test payloads
- Test payload multiplexing down to VC11/VT1.5 and internally generated PDH tributaries

PDH/T-Carrier Testing (Hardware Option*)

The test set provides optional PDH and DS_n test interface capabilities and sub-rates from 140 Mbps (E4), 34 Mbps (E3), 2 Mbps, down to N/M × 64 kbps and 45 Mbps (DS3), 1.5 Mbps (DS1), down to N/M × 56 kbps. Additional test features include simultaneous multilayer G.821, G.826, M.2100 results, Pulse Mask analysis and Round Trip Delay. The test rates also supports mapping and de-mapping of E1, E3, and E4 payloads in virtual containers and testing of TU-11, TU-12, TU-3, and STS-1, making it ideal for testing hybrid PDH/SDH/OTN and DS_n/SONET/OTN networks, access and legacy links.

**Consult factory for availability.*

Applications

Auto Scripting

The Auto Scripting feature is the perfect tool for the lab environment where multiple short-term or long-term test configurations are required to stress the network equipment and/or network under test, in order to measure and qualify the performance capabilities. The feature is also important in field operations, not only to speed-up service turn-up times, but also to facilitate the entire workforce the same test profiles and test procedures for day-to-day operations.

The Auto Scripting application is an automated sequence of tests that can be carried out by selecting previously configured Throughput or BERT profiles. The profiles can be created with ReVeal and then loaded to the unit or created directly on the unit in the Throughput and BERT applications. Users can select up to ten profiles, each profile configured with its own duration. The duration can be in seconds, minutes, hours, or days. The test sequence will begin with the first profile configured with its corresponding duration, followed by each profile after that. At the end of each profile tested a results file will be stored automatically before the test sequence continues to the next profile. Users have the option to continue or stop the auto scripting test if errors or alarms are detected.



Packet Capture and Decode

Configurable capture filters

- MAC and IP
- UDP and/or TCP
- Multicast, Broadcast, IP Checksum error, UDP/TCP Checksum Error events

Integrated Wireshark™ packet decode

Packet captures can be saved and exported PCAP capture format, compatible with Wireshark

Application Examples

Transceiver Health - Module temperature, alarm and failure information display



100GE V-SAM test results with 8 services. RXT-6000e is able to perform up to 32 services



Receive Optical Power per lane



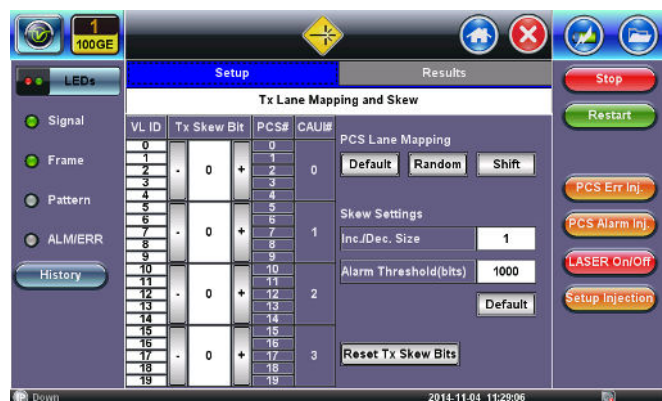
PCS analysis for alarms and errors



Example of 100GE Layer 2 100% throughput test result display



PCS, CAUI-4, Virtual lane and skew control setup



Test Interfaces

Optical Ports

CFP2

- 100GE
- OTU4

CFP4 (via CFP2-to-CFP4 Adapter)

- 100GE
- OTU4

QSFP28

- 100GE
- 50GE*
- OTU4

QSFP+

- 40GE
- OTU3

SFP28

- 25GE
- 8G, 16G and 32G FC

SFP/SFP+

- 100Base-FX, 1000Base-X, 10GBase-X
- OTU2, OTU2e, OTU1e, OTU1
- STM-0/1/4/16/64, OC-1/3/12/48/192
- 1G, 2G, 4G, 8G, 10G, 16G FC

Electrical Ports

RJ45

- 10/100/1000Base-T

BNC and RJ48 (factory-installed option)*

- E1, E3, E4, STM-0, STM-1, T1, T3, STS1, STS3

Physical Layer

RX Optical Power Measurements

- Per-lane input power measurement
- ± 2 dB accuracy, 0.01 dB resolution
- Aggregated (total) power in dBm
- LOS and Saturation indication

TX Optical Power Monitoring

- Per-lane output power in dBm
- Aggregated (total) power in dBm

RX Frequency Measurements

- RX Frequency (1 kHz resolution)
- Offset (ppm): Current, Minimum, Maximum

Optical Pluggable Modules*

Pluggable Module Information

- Power Class, Vendor, P/N, Serial Number, MSA HW revision, MSA MIS revision, Control 1 Register (IEEE), Expected Ability (supported rates)

Pluggable Module Status (CFP2/QSFP28/QSFP+/SFP28/SFP+ dependent)

- Module status, Alarm status, Internal Temperature, Voltage
- Transceiver unplugged
- Host Lane Fault, Network Lane Fault, Module Fault
- Network Lane Alarm, Module Alarm, General Alarm

Automatic initialization and laser safety reset (OFF) after hot swap

Operating temperature range: 0°C to 45°C

CFP2, CFP4, QSFP28, QSFP+, SFP28, SFP+ and SFP transceivers conforming to Multi Source Agreement (MSA) specifications

Safety: Class 1 Laser Product. Comply with FDA/CDRH 21 CFR

1040.10 and 1040.11, EN (IEC) 60825 eye safety regulations

ROHS compliant and Lead Free per Directive 2002/95/EC

*Dependent on module form factor and type

TX Clock Source

Internal: Quartz, $\leq \pm 3.5$ ppm

Tx Frequency Offset

- ± 150 ppm
- Steps of 0.1 ppm

Recovered: from incoming RX signal

External Clock Inputs (SMA)

- 2.048 MHz, 1.544 MHz, 10 MHz
- 1.544 Mbps, 2.048 Mbps (AMI, HDB3, B8ZS)
- 1 PPS

System's High-precision 1 PPS and 10 MHz Clocks

- GNSS/GPS clock (RXT-1200 platform option)
- Atomic Clock (RXT-1200 platform option)
- Atomic clock can be disciplined by the GPS if both options are present. Check RXT-1200 Platform datasheet for details.

Measurement Clock Reference

Internal: Quartz, $\leq \pm 3.5$ ppm

From RXT-1200 Platform (optional):

- Atomic 10MHz (disciplined or free-run)
- Atomic 1PPS (disciplined)
- GNSS/GPS 1PPS

External clock sources via SMA ports (A and B)

Reliability, Scalability and Quality of Service are the attributes needed for Ethernet to turn into Carrier-grade Ethernet. With standard features including RFC2544, VSAM, Throughput, MPLS and VLAN support, this test set has all the tools necessary to truly ensure end-to-end carrier-grade Ethernet services.

Key Features

- Transmit frequency offset to stress the network up to ± 150 ppm
- Optical Lane BERT
- CAUI-4/XLAUI Lane BERT
- FEC Layer Testing with Skew generation/monitoring
- PCS Layer Testing with Skew generation/monitoring
- Throughput, latency, jitter, frame loss, and back-to-back measurements per industry-standard RFC2544
- Multi-stream testing with up to 32 fully independent and configurable streams
- IPv4 and IPv6 traffic generation
- MAC Flooding
- Q-in-Q (VLAN stacking) and multiple MPLS tag support
- BER testing at Layer 2 and Layer 3 with or without VLAN and MPLS tags
- Smart Loop mode for Layer 2 and Layer 3 with all key measurements on received traffic provided on the loopback port
- One-way latency measurement between remote devices (with GPS synchronization)
- Line rate packet capture with Wireshark™ decode

Interfaces

100GE/40GE Compliant with IEEE 802.3ba

MSA compliant transceiver interfaces

CFP2 Interface bit rates

- 100GBase-R 103.125 Gbps

CFP4 Interface bit rates

- 100GBase-R 103.125 Gbps

QSFP28

- 100GBase-R 103.125 Gbps
- 50GBase-R 51.56 Gbps (ready)*

QSFP+

- 40GBase-R 41.25 Gbps

SFP/SFP+/SFP28

- 25GBase-R 25.78 Gbps
- 10GBase-X 9.95/10 Gbps
- 1000Base-X 1 Gbps
- 100Base-FX 100 Mbps

RJ45

- 10/100/1000Base-T

Frequency offset: ± 150 ppm (0.1 ppm step)

External reference clock input: 2.048 Mbps, 2.048 MHz, 1.544 Mbps, 1.544 MHz, 10 MHz, Received signal

Operating Modes

Terminate

Loopback

Passthrough Monitor

100G FEC Layer Testing

FEC lane mapping; default, manually defined, shift
FEC Skew generation per lane pair (0 to 160000 bits)

RX Skew tolerance up to 4000 bits

RX FEC lane monitoring: skew measurements (bits and ps) nad lane mapping

FEC Error/Alarm injection per lane or all lanes

FEC Error/Alarm injection: Corrected FEC, Uncorrected FEC, Invalid Transcoded Block errors, LOAMPS alarm

FEC Aggregate Error Counters: UFEC, CFEC, Invalid Transcoded Block (count and rate)

FEC Lane Error Counters: CFEC (count and rate)

FEC Aggregate Alarm Counters: HISER, LOA, LOAMPS, FEC Lane Swap (seconds), LOA event and LOAMPS event (count and rate)

FEC Lane Alarm Counters: LOAMP (secs), LOAMP events (count and rate)

100G/40G PCS Layer Testing

PCS lane mapping: default, manually defined, random or shift
PCS Skew generation per lane pair (0 to 16000 bits)

Configurable Skew alarm threshold

RX Skew tolerance up to 4000 bits

RX PCS lane monitoring: skew measurement (bits and ps) and lane mapping

PCS Error/Alarm injection per lane or all lanes

PCS Error injection (single, burst or rate): Invalid Sync Header, Invalid Alignment Marker, BIP error

PCS Alarm injection (continuous): Loss of Alignment Marker Lock, Loss of Block Lock, High BER

PCS Lane Error counters (aggregate and per lane): Invalid Sync Header, Invalid Alignment Marker, BIP error

PCS Lane Alarm: Loss of Alignment, Loss of block label, High-BER

Lane BERT

Per CAUI-4/XLAUI lane or optical lane unframed BERT

PRBS pattern: $2^{31}-1$, $2^{23}-1$, $2^{15}-1$, 2^7-1

Error injection (single or burst) per lane or multiple lanes: Bit error

Alarm injection per optical lane or multiple optical lanes: Optical LOS

Per lane and aggregate Bit error count and rate and Pattern loss

Optical Power Measurement

Per wavelength TX and RX power measurements

CFP2 vendor's detailed register display: Vendor, part number, Serial number, standard compliance

Optical module status: Temperature, Voltage, Alarm status

Framed Ethernet Traffic Generation

Layer 2 or Layer 3 traffic

Test Frame Header

- IEEE 802.3 and Ethernet II (DIX) frames
- Configurable Source and Destination MAC and Ethernet Type
- VLAN stacking up to 3 VLAN tags w/configurable priority & type
- MPLS-TP label with configurable LSP, PW and CW fields
- Provider Backbone Bridge (PBB) support with configurable Backbone MAC Source & Destination, I-SID, PBB-VLAN ID and priority
- EoE (Ethernet over Ethernet) support with configurable EoE MAC Source and Destination, Ethernet Type, EoE VLAN ID and Priority, TTL and EID
- Fully configurable IPv4 or IPv6 header
- MPLS up to 3 labels with configurable Label/S/CoS and TTL

Frame generation in fixed, random, increment, decrement modes

- Frame sizes from 64 to 1518 bytes and jumbo frames up to 16000 bytes

MAC flooding feature generates test frames with up to 4096 incremental Source and/or Destination MAC addresses

Traffic Pattern: Constant, Ramp, Multi Bursts, Single Burst

Ethernet Error Injection: Bit, CRC, Pause, IP Checksum, runt (60 bytes)

FEC Error and Alarm Injection: Corrected FEC, Uncorrected FEC, Invalid Transcoded Block errors, LOAMPS alarm

PCS Error Injection (per lane or multiple lanes): Invalid Sync Header, Invalid Alignment Marker, BIP error

Ethernet Alarm Injection: Local Fault, Remote Fault, Optical LOS

PCS Alarm Injection: Loss of Alignment Marker Lock, Loss of Block Lock, High BER

Key Measurements

Error Measurements: Bit/BER (BERT and single stream

Throughput Test), CRC, PCS Errored Blocks, IP checksum, jabber frames, runt frames, Frame loss (count and %), OSS

Alarm Detection: LOS, Local and Remote Fault

FEC Aggregate Error Counters: UFEC, CFEC, Invalid Transcoded Block (count and rate)

FEC Lane Error Counters: CFEC (count and rate)

FEC Aggregate Alarm Counters: HiSER, LOA, LOAMPS, FEC Lane Swap (seconds), LOA event and LOAMPS event (count and rate)

FEC Lane Alarm Counters: LOAMP (secs), LOAMP events (count and rate)

PCS Alarms and Errors: Loss of Alignment, Loss of block label, High-BER, Invalid Sync Header, Invalid Alignment Marker, BIP error

Frame/Packet Statistics: Multicast, broadcast, unicast, pause frames, frame size distribution

Rates (min, max, average and current): frame rate, bandwidth utilization, frame rate, line rate, data rate

Delay (min, max, average and current): round trip delay, inter frame gap, jitter, one-way delay between remote devices with GPS synchronization

Multiple Streams Throughput Testing

Up to 32 independent traffic streams generation and analysis, with configurable filters on 40GE and 100GE interfaces

Up to 10 independent traffic streams generation and analysis, with configurable filters on 10GE interface

Up to 8 independent traffic streams generation and analysis, with configurable filters on 1GE interface

Each stream can be set with independent frame size, bandwidth, traffic profile, and QoS levels

MAC flooding feature: generates test frames with up to 4096 incrementing Source and/or Destination MAC addresses

Test Patterns: PRBS: $2^{31}-1$, $2^{23}-1$, $2^{15}-1$, $2^{11}-1$, normal and inverted patterns, All 0s, All 1s and User Defined

Error Measurements: Bit/BER (Single Stream only), FCS/CRC, Jabber/Runt frames, IP Checksum, TCP/UDP Checksum, Frame Loss (count and %), Out of Sequence

Alarm Detection

- 10GE: LOS, LOSync, Service disruption (current, total, last, min/max, # of occurrences), Local Fault, Remote Fault, PCS-HI-BER, PCS-LOBL, WAN SONET Alarms: LOF, AIS-L and RDI-L WAN SDH Alarms: LOF, MS-AIS, MS-RDI
- 1GE: LOS, LOSync, Service disruption (current, total, last, min/max, # of occurrences)

Frame/Packet Statistics

- Multicast, broadcast, unicast, pause frames, frame size distribution

Rates (min, max, average and current): frame rate, bandwidth utilization, frame rate, line rate, data rate

- Frame arrival time (min, max, average and current), Frame Delay Variation
- Round Trip delay or One-Way Delay OWD* (min, max, average and current) and Histogram distribution with configurable sampling period and threshold

RFC2544 Compliance Testing

Automated tests compliant with RFC2544 with configurable threshold values and maximum transmit bandwidth settings Throughput, Latency, Jitter, Frame Loss, and Back-to-Back (burst) tests Frame sizes: 64, 128, 256, 512, 1024, 1280, and 1518 bytes including 2 user configurable frames

Loopback Mode

Layer 2: all incoming traffic is looped back with MAC source and destination addresses swapped

Layer 3: all incoming traffic is looped back with MAC and IP source and destination addresses swapped

Loopback traffic filters with all MAC/VLAN/IP parameters configurable

All key measurements on received traffic provided on the loopback port

IP Test Suite

IP Configuration and validation (IPv4, IPv6, Static, DHCP, PPPoE) MAC address (configurable or default)

Ping and trace-route tests (IP address or URL)

Network discovery/ARP wizard

IPv6

IPv6 compliant test traffic generation and analysis for all test applications (Y.1564 V-SAM, RFC2544, BERT and Multi-stream Throughput)

IPv6 Loopback capability

IPv6 Static or Stateless Auto Configuration and Ping function Fibre Channel

**Requires GPS option*

Fibre Channel

Key Features

- SFP, SFP+ and/or SFP28 optical ports supporting 1.0625 Gbps, 2.125 Gbps, 4.25 Gbps, 8.5 Gbps, 10.52 Gbps, 14.025 Gbps and 28.05 Gbps
- Full line rate traffic generation and analysis
- Primitive Sequence Protocol support
- Flow control support with Buffer-to-Buffer credits
- FC-1 and FC-2 BERT and Throughput
- RFC2544: Throughput, Latency, Frame Loss, and Back-to-Back frames tests
- FC-2 Smart Loop mode
- Service Disruption Measurement
- FC-2 Frame Header configuration
- Test traffic shaping: constant, ramp, and burst
- Frame Length configuration up to 2148 bytes

Throughput and Bit Error Rate Test (BERT)

The Fibre Channel protocol specifies a maximum allowable Bit Error Rate (BER) of $\leq 1 \times 10^{-12}$ that must be achieved. The test set allows the user to stress FC-1 and FC-2 network layers to ensure accurate benchmarking.

For FC-1, frequency fluctuations, transceiver noise and phase jumps are tested using CRPAT, CSPAT, and CJPAT patterns. Data dependency and behavior of network components are checked with PRBS patterns, sequence number tracking, and time stamping to calculate frame loss, round trip delay, and other performance metrics.

RFC2544 Benchmarking

Based on the Ethernet test methodology, the RFC2544 routine has been adapted to Fiber Channel circuits where flow-control and buffer verification is important. The feature checks throughput and round trip delay at various buffer sizes to verify optimal buffer size and best possible link performance.

Interfaces

Dual SFP28/SFP+/SFP

- 32GFC 28.050 Gbps
- 16GFC 14.025 Gbps
- 10GFC 10.519 Gbps
- 8GFC 8.500 Gbps
- 4GFC 4.250 Gbps
- 2GFC 2.125 Gbps
- 1GFC 1.062 Gbps

Optical Ports: LC connectors

Modes of Operation

Terminate, Loopback

Fibre Channel Topology

Point-to-Point

Primitive Sequence Protocols

Link initialization, link rest, link failure

Flow Control

Buffer-to-Buffer Credit Configuration: 1-65535

Traffic Generation

FC-1 (with SOF and EOF frame delimiters) and FC-2 Frames
Class 3 Service frames

Scrambling/Descrambling (8.5 Gbps only)

Configurable Header fields

Configurable EOF (EOF_t, EOF_n), and SOF (SOF_i3, SOF_n3, SOF_f)

Traffic Shaping: constant, ramp, burst

Frame Length Configuration: 2148 bytes maximum

RFC2544 Compliance Testing

Automated tests compliant with RFC2544 with configurable threshold values for Throughput and Round Trip Delay (Latency) and maximum transmit bandwidth settings
Throughput, Latency, Frame Loss, and Back-to-Back (burst) tests
Frame sizes: 64, 128, 256, 512, 1024, 1280, and 2000 bytes including 2 user configurable frames

Bit Error Rate Testing

NCITS-TR-25-1999 Patterns (FC-1): CRPAT, CSPAT, CJPAT

PRBS Patterns (FC-2): $2^{31}-1$, $2^{23}-1$, $2^{15}-1$, $2^{11}-1$, normal and inverted selections, and user defined patterns

Error Injection: Bit and CRC

Loopback Mode

FC-1

FC-2 (Layer 2): swaps the destination and source IDs (D-ID and S_ID)

Key Measurements

Optical power levels: transmit and receive optical levels in dBm
Error Measurements: Bit error count, BER, symbol, FCS/CRC, oversize, undersize, frame loss (count and %), out of sequence frame count

Alarm Detection: LOS, pattern loss, service disruption

Traffic Statistics: bandwidth utilization, data rate, frame count, byte count, frame size distribution, buffer-to-buffer credit count, RR_RDY count, frame loss count and round trip delay

Rates: line rate, framed rate, data rate, frames per second rate
Delay (min, max, avg, current): round trip delay, frame arrival delay

OTN Testing

The RXT-6000e Module offers full range of OTN testing capabilities for all standard OTN interfaces, including service-activation (Bringing-into-Service), performance verification, maintenance, and troubleshooting. It offers Multi-Layer testing from Physical layer (WDM), CAUI-4/XLAUI, OTL, OTUk/ODUk, to bulk payloads, and Ethernet traffic generation up to 100% rate.

OTN Functions

Test Interfaces

MSA compliant transceiver interfaces

CFP2, CFP4, QSFP28 Interface bit rates

- OTU4 111.810 Gbps

QSFP+

- OTU3 43.108 Gbps

SFP/SFP+/ SFP28

- OTU2e 11.095 Gbps
- OTU1e 11.045 Gbps
- OTU2 10.709 Gbps
- OTU1 2.666 Gbps

Key Features

- Advanced Mapping/Multiplex Structures
- EoOTN testing with internally generated Ethernet payload mapped into OTU1e, OTU2e, OTU3 (up to 40 Gbps) or OTU4 (up to 100 Gbps)
- Internally generated SDH/SONET payloads
- OTU, ODU, OPU overhead manipulation and monitoring
- OTU, ODU, OPU layer alarms/errors generation and analysis
- OTU, ODU, TCMi trace messages
- Service Disruption monitoring
- Forward error correction (FEC)
- Tandem Connection Monitoring
- Frequency offset generation and measurement

Operating Modes

Normal (terminal)

- The instrument terminates the line, serving as source and sink for the generated traffic
- Offers full access to Overhead and Payload alarms and error generation and monitoring

Payload Through

- Instrument retransmits the received Payload and allows access to Overhead manipulation
- Offers full access to Overhead alarms and error generation as well as Payload monitoring

Line Through

- Instrument regenerates and retransmits the entire received signal
- Offers minimal interaction with the test signal
- Provides full access to Overhead and Payload alarms and error monitoring

OTN Mappings

Standards: ITU-T G.709, ITU-T G.798, ITU-T G.872

Mapping Procedures: AMP, BMP and GMP

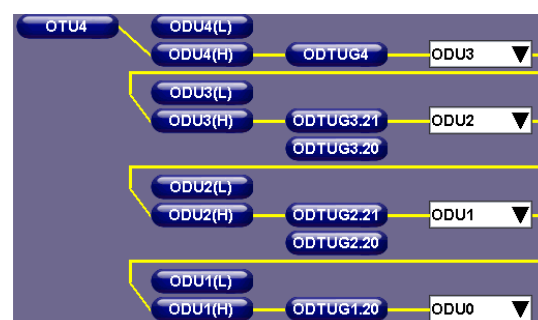
Direct OTN Mapping Options

Single-step (direct) mapping options

- OTU4-ODU4-Bulk
- OTU4-ODU4-100GE
- OTU3-ODU3-Bulk
- OTU3-ODU3-STM256/OC768
- OTU3-ODU3-40GE
- OTU2e-ODU2e-Bulk
- OTU2e-ODU2e-10GE
- OTU1e-ODU1e-Bulk
- OTU1e-ODU1e-10GE
- OTU2-ODU2-Bulk
- OTU2-ODU2-STM64/OC192
- OTU1-ODU1-Bulk
- OTU1-ODU1-STM16/OC48

Multi-step OTN Mapping/Multiplex Options

These OTUk options offer the most complete and flexible combinations of payload mappings and multiplexing structures available for lab, manufacturing, advanced service-activation testing, maintenance, and troubleshooting environments, without increasing complexity or requiring additional training.



OTU4 multi-step mapping/multiplex structures

- OTU4-ODU4-ODU3-ODU2e
- OTU4-ODU4-ODU3-ODU2
- OTU4-ODU4-ODU3-ODU2-ODU1
- OTU4-ODU4-ODU3-ODU2-ODU1-ODU0
- OTU4-ODU4-ODU3-ODU2-ODU0
- OTU4-ODU4-ODU3-ODU1
- OTU4-ODU4-ODU3-ODU1-ODU0
- OTU4-ODU4-ODU3-ODU0
- OTU4-ODU4-ODU2-ODU1
- OTU4-ODU4-ODU2-ODU1-ODU0
- OTU4-ODU4-ODU2-ODU0
- OTU4-ODU4-ODU1-ODU0
- Flexible TS selection for each ODUk stage

OTU3 multi-step Mapping/Multiplex

- OTU3-ODU3-ODU2-ODU1
- OTU3-ODU3-ODU2-ODU1-ODU0
- OTU3-ODU3-ODU2-ODU0
- OTU3-ODU3-ODU1
- OTU3-ODU3-ODU1-ODU0
- OTU3-ODU3-ODU0
- Flexible TS selection for each ODUk stage

OTU2 and OTU1 Mapping/Multiplex

- OTU2-ODU2-ODU1
- OTU2-ODU2-ODU1-ODU0
- OTU2-ODU2-ODU0
- OTU1-ODU1-ODU0

Single-Step ODUflex Mapping/Multiplex Options

Adds ODUflex capabilities to the single-step OTN Mapping/Multiplex options

OTU4 ODUflex Mapping/Multiplex Structures (Nx1.25 Gbps)

- OTU4-ODU4-ODUflex

OTU3 ODUflex Mapping/Multiplex Structures (Nx1.25 Gbps)

- OTU3-ODU3-ODUflex

OTU2 ODUflex Mapping/Multiplex Structures (Nx1.25 Gbps)

- OTU2-ODU2-ODUflex

ODUflex Tributary Slots

- ODTU4.ts: N=1 to 80 TS
- ODTU3.ts: N=1 to 32 TS
- ODTU2.ts: N = 1 to 8 TS
- Flexible TS selection

Multi-step ODUflex Mapping/Multiplex Options

OTU4 ODUflex Mapping/Multiplex (Nx1.25 Gbps)

- OTU4-ODU4-ODU3-ODUflex
- OTU4-ODU4-ODU3-ODU2-ODUflex
- OTU4-ODU4-ODU2-ODUflex

OTU3 ODUflex Mapping/Multiplex (Nx1.25 Gbps)

- OTU3-ODU3-ODU2-ODUflex

ODUflex Tributary Slots

- ODTU3.ts: N = 1 to 32 TS
- ODTU2.ts: N = 1 to 8 TS
- Flexible TS selection for each ODU stage

Test Setup

Test configuration, menus, and results are presented in VeEX's intuitive GUI, requiring little or no training for new or existing VePAL™ users, maintaining a consistent user experience from the lab to the field.

Layer-based graphical configuration interface allows users to build the test signal in a logical layer by layer sequence

- OTL Lanes
- OTN Signal
- ODUk (Mapping and Multiplexing)
- Payload (Bulk/PRBS, SDH/SONET or Ethernet)
- Test Pattern (CBR) or Traffic (Packets)

OTL Layer

OTL4.10 (OTU4)

OTL3.4 (OTU3)

TX Lane Mapping and Skew Generation

- Lane ID, Lane #, and Channel assignments

Lane Mappings

- Default (1 to 1)
- Random assignment
- Lane ID Shift

Skew Settings

- Skew Range: 0 to 64000 bits
- Adjustable Increment/Decrement steps (0 to 200 bits)
- Increase and Decrease control buttons and direct keypad entry
- Alarm Threshold (1 to 4000 bits)
- Enable/Disable RX MFAS Deskew

Per-Lane Alarm and Error Monitoring

- Alarms: OTL-LOL, OTL-OOL, OTL-LOF, OTL-OOF, OTL-LOR, OTL-OOR, OTL-OOLLM, OTL-OOMFAS, High Skew
- Errors: OTL-LLM, OTL-MFAS, OTL-FAS
- Soft LED overview and individual event counters
- Per-lane Skew measurements in bits and picoseconds
- Independent OTL events log with time stamp

OTU Layer

Alarm and Error Monitoring

- Alarms: LOM, OOM, SM-IAE, SM-BDI, SM-BIAE, SM-TIM
- Errors: MFAS, SM-BIP, SM-BEI, Correctable FEC, Uncorrectable FEC

ODU Layer

Alarm and Error Monitoring

- Alarms: AIS, OCI, LCK, PM-BDI, PM-TIM
- Errors: FAS, MFAS, PM-BIP, PM-BEI

OPU Layer

Payload Type (PT): Generates and displays received PT value

Expected Payload label setting

Enable/Disable PLM monitoring

Alarm and Error Monitoring

- Alarms: PLM, LO-OMFI, OO-OMFI
- Errors: OMFI (ODTU4.M)

GMP Stuffing

TX Settings

- Extended Offset support (Enable/Disable)
- Effective Cm Value

TX Values

- Nominal Cm Value, Nominal Bit Rate (kbps), Effective Bit Rate (kbps), Offset (ppm)

Alarm and Error Monitoring

- Alarms: GMP Loss of Sync, GMP Cm=0; in seconds
- Errors: CRC-5, CRC-8; count and ratio

RX Statistics

- Effective Cm Value, Minimum Cm Value, Maximum Cm Value
- Nominal Bit Rate (kbps), Effective Bit Rate (kbps), Offset (ppm)
- No Change, Single Increments, Double Increments, Single Decrements, Double Decrements, New Values

AMP Stuffing

TX Settings

- Offset (ppm)
- Stuffing Method: +1/0/-1 (PIO2 not used), +2/0/-1 (PIO2 used)

RX Statistics

- Offset (ppm)
- Positive, Double Positive, Negative, Total

BER Test (Alarm and Error Monitoring)

- Alarms: LOP (Loss of Pattern)
- Errors: Bit (Test Sequence Error)

Test Patterns

Test sequence availability depends on selected data rate and/or test mode

- PRBS: $2^{31}-1$, $2^{23}-1$, $2^{20}-1$, $2^{15}-1$, $2^{11}-1$, 2^9-1 , 2^7-1
- Legacy and Fixed: QRSS, NET55, OCT55, DALY, All 1, All 0, 1010, 1100, 1in8, 2in8, 3in24, user-defined 24-bit and 10 x 32-bit
- Normal or Inverted

Error Insertion

OTL Layer

- FAS, MFAS, LLM
- Affected Lanes: Single or Multiple
- Modes: Single, Single Burst, Rate

OTU/ODU/OPU

- MFAS, SM-BIP, SM-BEI, Correctable FEC, Uncorrectable FEC, ODU-FAS, ODU-MFAS, PM-BIP, PM-BEI, TCMi-BIP, TCMi-BEI, GMP CRC-5, GMP CRC-8, OMFI (ODTU.M)
- Modes: Single, Single Burst, Fixed Rate or Custom Rate

Payload

- Bit (Test Sequence Error)
- Modes: Single, Single Burst, Rate

Alarm Generation

Physical Layer

- LOS
- Affected Optical Lanes: Single or Multiple
- Modes: Continuous (manual)

OTL Layer

- LOF, OOF, OOLLM, OOMFAS
- Affected Lanes: Single or Multiple
- Modes: Continuous (manual), Single Burst (# of ON frames), Continuous Burst (# of ON frames and # of OFF frames)

OTU/ODU/OPU

- OTU-LOM, OTU-OOM, SM-IAE, SM-BDI, SM-BIAE, SM-TIM, ODU-AIS, ODU-OCI, ODU-LCK, ODU-LOF, ODU-OOF, PM-BDI, PM-TIM, TCMi-AIS, TCMi-OCI, TCMi-LCK, TCMi-BDI, TCMi-TIM, TCMi-BIAE, TCMi-LTC, OPU-PLM, GMP LO-Sync, GMP Cm=0
- ODTU4.M: LO-OMFI, OO-OMFI
- Modes: Continuous (manual), Single Burst (# of ON frames), Continuous Burst (# of ON frames and # of OFF frames)

OTN Overhead Analysis and Generation

Multi-stage support: Provides access to OTU and ODUk overheads for all the layers present in complex mapping/multiplex structures

- OTU4, ODU4, ODUk, OPUk
- OTU3, ODU3, ODUk, OPUk
- OTU2, ODU2, ODUk, OPUk
- OTU1, ODU1, OPUk

Analysis – Decode and Display

Multiframe selection modes

- Display bytes can be locked to specific multi-frame (0 to 255)
- Free running

Byte Decoding

- On-screen Decode of all bytes and strings
- Byte Capture (raw data): 256 bytes (Hex)

ODUk bytes in hexadecimal, binary or ASCII formats

- SM-TTI (SAPI, DAPI, User), SM-BIP, SM-BEI (BEI/BIAE, BDI, IAE)
- PM-TTI (SAPI, DAPI, User), PM-BIP, PM-BEI (BEI/BIAE, BDI, IAE)
- TC, TCMi-TTI (SAPI, DAPI, User), TCMi-BIP, TCMi-BEI (BEI/BIAE, BDI, IAE)
- GCC0, GCC1, GCC2 bytes
- PCC/APS bytes
- FTFL bytes (forward and backward faults)
- Reserved bytes

OPUk bytes in hexadecimal and binary formats

- JC1, JC2, JC3, JC4, JC5, JC6, PSI, NJO/OMFI

Generation - Programmable Bytes and sequences

OTU and ODU Trace Generation

- SAPI (15 characters)
- DAPI (15 characters)
- User (31 characters)

TCMi Trace Generation

- SAPI (15 characters)
- DAPI (15 characters)
- User (31 characters)

Set TCMi Status

- No source TC, In use without IAE, In use with IAE, Reserved, ODUk-LCK, ODUk-OCI, ODUk-AIS
- Enable/Disable TC monitoring

OTU/ODU Trace Analysis and Generation

- Programmable Transmit and Expected OTU and ODUk Traces
- OTU and ODU SAPI, DAPI, and User
- Enable/Disable OTU/ODU TIM monitoring
- GCC Channel BERT
- BER test on GCC0, GCC1 and GCC2 with PRBS
- Round Trip Delay measurement

Tandem Connection Monitoring (TCM)

TCMi Monitoring (1 through 6)

- Alarms: AIS, OCI, LCK, BDI, BIAE, LTC, TIM
- Errors: BIP, BEI

Trace Identifier Monitoring and Generation

- Programmable Transmit and Expected SAPI, DAPI and User traces
- Copy trace from RX
- Enable/Disable TIM monitoring

Ethernet over OTN Testing

Internally generated Ethernet Payloads into ODU4, ODU3, ODU2e, ODU1e, ODU0

- Layer 2
- Layer 3 (IPv4 and IPv6)
- VLAN: Up to 3 tags
- MPLS: Up to 3 tags

Ethernet Testing

- BERT
- Throughput

Traffic Flows

- Programmable test bandwidth up to 100%
- Constant Bandwidth
- Ramp (Start BW, Stop BW, BW steps, Ramp time, Repetitions)
- Burst (Two traffic levels - Burst 1 BW, Burst 2 BW, Burst 1 time, Burst 2 time)
- Single Burst (1 to 10000 frames)
- Unless otherwise specified, traffic (BW) values can be entered in % of line rate, # of IPG Bytes, Frames per Second, and Mbit/s

Test Patterns (payload)

- PRBS: $2^{31}-1$, $2^{23}-1$, $2^{20}-1$, $2^{15}-1$, 2^9-1
- Normal, Inverted OR Live traffic

Test Traffic RX Filter

- MAC Source, MAC Destination, Frame Type, DSCP, Protocol Type, IP Source, IP Destination

**Refer to the Ethernet Testing section for more details on Ethernet test results.*

Events Log

Date and time stamped record of all events occurred during a test, presented in tabular format
Includes event name, time, duration and count/severity
Individual event logs for OTL, OTN, BERT and Ethernet

Soft LED Indicators

Fixed OTN indicators for Signal, Framing, Pattern and Errors/Alarms
Expanded, layer by layer, detailed status summary
Display historical events and conditions
History reset function

- Clears the LED reminder without affecting the measurement counters

SDH/SONET Testing

SDH/SONET signals can be used as physical layer or as OTU1/OTU2/OTU3/OTU4 payloads, and can contain multiplexed SDH/SONET or PDH/DSn clients, providing all the flexibility to address complex test scenarios.

Test Interfaces

SFP/SFP+/SFP28

- STM-64/OC-192 9.953 Gbps
- STM-16/OC-48 2.448 Gbps
- STM-4/OC-12 622 Mbps
- STM-1/OC-3 155 Mbps
- STM-0/OC-1 52 Mbps

BNC (with PDH/DSn hardware option)*

- STM-1e/STS-3 155 Mbps
- STM-0e/STS-1 52 Mbps

Key Features

- STM-64/16/4/1/0
- OC-192/48/12/3/1
- Bulk VC/STS/VT, PDH/DSn and multiplexed payloads
- Overhead manipulation and monitoring
- Alarms/errors generation and analysis
- Round Trip Delay
- Tributary Scan
- Tandem Connection Monitoring
- Pointer Test Sequences

Operating Modes

Normal (terminal)

- The instrument terminates the line, serving as source and sink for the generated traffic
- Offers full access to Overhead and Payload alarms and error generation and monitoring

Payload Through (intrusive)

- Instrument retransmits the received Payload and allows access to Overhead manipulation
- Offers access to Overhead alarms and error generation as well as Payload monitoring

Line Through (Transparent)

- Instrument regenerates and retransmits the entire received signal
- Offers minimal interaction with the test signal
- Provides full access to Overhead and Payload alarms and error monitoring

SDH Mappings

(According to ITU-T G.707)

- C-11 (Bulk/PRBS, unframed or framed DS1)
- C-12 (Bulk/PRBS, unframed or framed E1)
- C-3 (Bulk/PRBS, unframed, framed or channelized E3 or DS3) via AU-3 or AU-4
- C-4 (Bulk/PRBS, unframed or framed E4)
- C-4-4c (Bulk/PRBS)
- C-4-16c (Bulk/PRBS)

SONET Mappings

(According to Telcordia GR-253/ANSI T1.105)

- VT-2 (unstructured or framed E1)
- VT-1.5 (unstructured or framed DS1)
- STS-1 SPE (unstructured or framed E3 or DS3)
- STS-3c SPE (unstructured or framed E4)
- STS-12c SPE (Bulk)
- STS-48c SPE (Bulk)
- STS-192c SPE (Bulk)

Test Patterns

The following test patterns can be generated

- PRBS: $2^{31}-1$, $2^{23}-1$, $2^{20}-1$, $2^{15}-1$, $2^{11}-1$, 2^9-1 , 2^7-1 , QRSS
- Fixed: 0000, 1111, 1010, 1100, 1in8, 2in8, 3in24, DALY, NET55 and OCT55
- User defined: Ten 32-bit and one 24-Bit Programmable sequences
- Mode: Normal or Inverted

Errors

Insertion

- SDH: FAS, B1, B2, MS-REI, B3, HP-REI, LP-REI, LP-BIP, and bit errors
- SONET: FAS, B1, B2, REI-L, B3, REI-P, REI-V, BIP-V, and bit errors
- Modes: Single, Count (# of errors), Fixed Rates (1E-9 to 1E-3)

Detection

- SDH: FAS, B1, B2, MS-REI, B3, HP-REI, LP-BIP, LP-REI, slips and bit errors
- SONET: FAS, B1, B2, REI-L, B3, REI-P, REI-V, BIP-V, slips and bit errors

Alarms

Generation

- SDH: LOS, LOF, MS-AIS, MS-RDI, RS-TIM, AU-LOP, AU-AIS, HPUNEQ, HP-PLM, HP-RDI, HP-TIM, TU-LOM, TU-LOP, TU-AIS, LPUNEQ, LP-PLM, LP-RDI, LP-RFI, LP-TIM, 2M AIS, 2M LOF, 2M RDI
- SONET: LOS, LOF, AIS-S, RDI-S, TIM-P, LOP-P, AIS-P, UNEQ-P, PLM-P, RDI-P, LOM-V, LOP-V, AIS-V, UNEQ-V, PLM-V, RDI-V, RFI-V, TIM-V, DS1-AIS, DS1-LOF, 2M-AIS, 2M-LOF, 2M-RDI, 45M-AIS, 45M-LOF
- Modes: Continuous (manual), Count (0.1, 1, 10, 100 seconds)

Monitoring and Detection

- SDH: LOS, LOF, OOF, RS-TIM, MS-AIS, MS-RDI, AU-AIS, AU-LOP, HP-UNEQ, HP-PLM, HP-TIM, HP-RDI, TU-LOM, TU-AIS, TU-LOP, LP-UNEQ, LP-PLM, LP-TIM, LP-RDI, LP-RFI
- SONET: LOS, LOF, OOF, AIS-S, RDI-S, TIM-P, LOP-P, AIS-P, UNEQ-P, PLM-P, RDI-P, LOM-V, LOP-V, AIS-V, UNEQ-V, PLM-V, RDI-V, RFI-V, TIM-V

Other Tests

- Service Disruption Testing (SDT) with events log and concurrent with BERT
- Round Trip Delay (RTD)
- APS Signaling Monitor and Decode (K1, K2)

SDH Overhead Analysis and Generation

Network Architectures supported

- Linear (per ITU-T G.783)
- Ring (per ITU-T G.841)

Analysis – Decode and Display SOH/POH bytes in hexadecimal, binary or ASCII formats

- S1 synchronization status
- C2 HP/STS signal label
- J0 trace identifier (1, 16 or 64 bytes) in ASCII format
- J1 trace identifier (16 or 64 bytes) in ASCII format
- J2 trace identifier (16 or 64 bytes) in ASCII format
- K1, K2 APS Control
- V5 LP/VT signal label

Generation - Programmable Bytes RSOH/Section

- J0 trace: 1 byte hexadecimal, 16 byte ASCII with CRC-7 and 64 byte with CR+LF

MSOH/Line

- K1, K2 APS bytes per ITU-T G.783 and G.841
- S1 synchronization status message

HO-POH (VC-4, VC-3)/STS-POH (STS-N SPE, STS-1 SPE)

- J1 trace: 16 byte ASCII with CRC-7 or 64 byte ASCII sequence
- C2 signal label
- H4 Sequence/Multiframe Indicator
- G1 (bit 5): End-to-end path status (RDI generation)
- K3 (bits 1-4) APS signaling

LO-POH (VC-3)/STS-POH (STS-1 SPE)

- J1 trace: 16 byte ASCII with CRC-7 or 64 byte ASCII sequence
- C2 signal label
- G1 (bit 5): End-to-end path status (RDI generation)
- K3 (bits 1-4) APS signaling

LO-POH (VC-12, VC-11)/VT-POH (VT-1.5, VT-2)

- V5 (bits 5-7) LP/VT signal label
- J2 trace: 16 byte ASCII with CRC-7 or 64 byte ASCII sequence
- K4 (bits 3-4) LP/VT APS signaling

SONET Overhead Analysis and Generation

Network Architectures supported

- Linear (per ITU-T G.783)
- Ring (per ITU-T G.841)

Analysis – Decode and Display

SOH/POH bytes in hexadecimal, binary or ASCII formats

- S1 synchronization status
- C2 STS path signal label
- J0 trace identifier (1, 16 or 64) in ASCII format
- J1 trace identifier (16 or 64 bytes) in ASCII format
- J2 trace identifier (16 or 64 bytes) in ASCII format
- K1, K2 APS Control

Generation - Programmable Bytes

Section Overhead

- J0 trace: 1 byte hexadecimal, 16 byte ASCII with CRC-7 and 64 byte with CR+LF

Line Overhead

- K1, K2 APS bytes per ITU-T G.783 and G.841
- S1 synchronization status message
- STS-POH (STS-N SPE, STS-1 SPE)
- J1 trace: 16-byte ASCII with CRC-7 or 64-byte ASCII sequences
- C2 signal label
- G1 (bit 5): End-to-end path status (RDI generation)
- K3 (bits 1-4) APS signaling
- STS-POH (STS-1 SPE)
- J1 trace: 16 byte ASCII with CRC-7 or 64 byte ASCII sequence
- C2 signal label
- G1 (bit 5): End-to-end path status (RDI generation)
- K3 (bits 1-4) APS signaling

Tributary Scan

Automatically scans all VC-12, VC-11, VT-1.5 or VT-2 and reports alarms, errors, J2 trace and payload label

Pointer Analysis and G.783 Test Sequences

Pointer movements monitoring and generation for SDH and SONET

Monitor

- AU, TU, STS and VT pointer adjustments
- SS bits, LOP, New Data Flags (NDF)
- Current value, increments, decrements, sum, difference
- Tributary frequency offset (ppm of AU/TU or STS/VT)

Generation

- Pointer sequences : ITU-T G.783, Telcordia GR-253
- Pointer Types: AU, TU, STS, VT
- Single pointer, increment, decrement, or increment/decrement
- Sequence: Basic, Single Alternating, Regular Additive, Regular Cancel, Double Alternating, Burst, Transient Burst, 87/3, 87/3 Additive, 87/3 Cancel, Periodic Additive, Periodic Cancel
- Programming of SS bits
- Adjustments: Increment, Decrement, New Value
- Parameters: N, T1, T2, T3, T4

Tandem Connection Monitoring (TCM)

Generation and analysis of N1 (HP-TCM) and N2 (LP-TCM) bytes
Detection, display and analysis of events

- UNEQ, TC-AIS, TC-ODI, TC-IEC, TC-REI, TC-OEI, TC-LTC, TC-RDI

Common Functions & Measurements

Auto Configuration

Available for SDH and SONET signals

Identification of received signal - instrument configuration based on network type, bit rate, line coding, framing, mapping, and test pattern

Signal Level and Frequency Measurement

Available for Optical Interfaces

Signal level

- Optical power in dBm and Loss/Saturation graph

Frequency (Line and Payloads)

- Resolution: 1 bit/s (bps)

Frequency Offset

- Resolution: 0.1 ppm
- Current, Minimum and Maximum

Round Trip Delay

(Available for all interfaces & mappings)
Measurement Range: 1 μ s to 10 seconds
Resolution: $\pm 1 \mu$ s or 1 U.I.

Event Logging

Date and time stamped records of all error and alarm events occurred during a test, presented in tabular format

Histograms

(Available for OTU2, OTU1, SDH/SONET and PDH/DSn interfaces)
Histogram: Simultaneous display of Errors and Alarms versus time for sequence of events correlation
Bar Graph: Individual Error or Alarm severity versus time
Resolution: Seconds, minutes, hours and days

PDH/DSn Testing*

The optional PDH and DSn (T-carrier) rates and features may be available as physical interfaces or internally-generated payloads within SDH/SONET/OTN. Their availability depends on configuration, multiplexing and/or mappings being used.

PDH/DSn Interfaces

Requires factory-installed SDH/PDH electrical interfaces module*

Electrical

- RJ-48 (120 Ω) or Bantam* (100 Ω) balanced
- DS1, 1.544 Mbps, AMI & B8ZS, 100 Ω balanced
- E1, 2.048 Mbps, HDB3 & AMI, 120 Ω balanced
- G.703 Codirectional, 64 Kbps, 120 Ω balanced*
- BNC (75 Ω unbalanced)
- E1, 2.048 Mbps, HDB3 & AMI
- E3, 34.368 Mbps, HDB3
- DS3, 44.736 Mbps, B3ZS
- E4, 139.264 Mbps, CMI

Compliant to ITU-T G.703, G.823, G.824, G.772 and ANSI T1.102

Receiver Sensitivity

- 1.544 Mbps (DS1)
 - Terminate: ≤ 26 dB (cable loss only) at 0 dB DSX TX
 - Monitor (PMP): ≤ 26 dB (20 dB resistive, 6 dB cable loss)
 - Bridge: ≤ 6 dB (cable loss only)
 - Line Equalizer function provides increased dynamic range to support for LBO < -7.5 dB
- 2.048 Mbps (E1)
 - Terminate: ≤ 6 dB (cable loss only)
 - Monitor (PMP): ≤ 26 dB (20 dB resistive, 6 dB cable loss)
 - Bridge: ≤ 6 dB (cable loss only)
 - Line Equalizer function provides increased dynamic range to support for LBO < -7.5 dB
- 34.368 Mbps (E3)
 - Terminate: ≤ 12 dB (cable loss only)
 - Monitor (PMP): ≤ 26 dB (20 dB resistive, 6 dB cable loss)
- 44.736 Mbps (DS3)
 - Terminate: ≤ 10 dB (cable loss only)
 - Monitor (PMP): ≤ 26 dB (20 dB resistive, 6 dB cable loss)
- 139.264 Mbps (E4)
 - Terminate: ≤ 12 dB (coaxial cable loss only)

Operating Modes

Terminate, Monitor, Bridge (E1 & DS1)

Signal Structure

1.544 Mbps (DS1)

- Unframed or Framed SF (D4), ESF per ANSI/Telcordia standards
- Fractional test signal in N x 64 kbps or N x 56 kbps, where N=1 to 24

2.048 Mbps (E1)

- Unframed or Framed with/without CRC per ITU-T G.704 (PCM30, PCM30C, PCM31, PCM31C)
- Fractional test signal in N x 64 kbps, where N=1 to 30/31

8.448 Mbps (E2)

- Unframed or Framed according to ITU-T G.742

34.368 Mbps (E3)

- Unframed or Framed according to ITU-T G.751

44.736 Mbps (DS3)

- Unframed or Framed M13 & C-Bit Parity per ITU-T G.752/G.704

139.264 Mbps (E4)

- Unframed or Framed per ITU-T G.751

Test Patterns

The following test patterns can be generated

- PRBS: $2^{31}-1$, $2^{23}-1$, $2^{20}-1$, $2^{15}-1$, $2^{11}-1$, 2^9-1 , 2^7-1 , QRSS
- Fixed: 0000, 1111, 1010, 1100, 1in8, 2in8, 3in24, DALY, NET55 and OCT55
- User defined: Ten 32-bit and one 24-Bit Programmable sequences
- Mode: Normal or Inverted

Errors

Insertion

- 1.544 Mbps (DS1): Code, FAS, Bit, Frame, CRC
- 2.048 Mbps (E1): Code, FAS, CRC, EBIT, Bit errors
- 8.448 Mbps (E2): Code, 8M FAS, 2M FAS, 2M CRC, 2M RDI, Bit errors
- 34.368 Mbps (E3): Code, 34M FAS, 8M FAS, 2M FAS, 2M CRC, 2M RDI, Bit errors
- 44.736 Mbps (DS3): Code, FAS, MFAS, P/C-Parity, Bit errors
- 139.264 Mbps (E4): Code, FAS, Bit errors
- Modes: Single, Count (# of errors), Fixed Rates (1E-9 to 1E-3)

Measurement

- 1.544 Mbps (DS1): Code, FAS, Bit, Frame, CRC
- 2.048 Mbps (E1): Code, FAS, CRC, EBIT and Bit errors
- 8.448 Mbps (E2): Code, FAS, Bit errors
- 34.368 Mbps (E3): Code, FAS, Bit errors
- 44.736 Mbps (DS3): Code, FAS, MFAS, P/C-Parity, Bit errors
- 139.264 Mbps (E4): FAS

Alarms

Generation

- 1.544 Mbps (DS1): AIS, yellow, idle, LOS, LOF
- 2.048 Mbps (E1): LOS, AIS, LOF, RDI
- 8.448 Mbps (E2): 8M AIS, 8M LOF, 8M RDI, 2M AIS, 2M LOF, 2M RDI
- 34.368 Mbps (E3): 34M LOS, 34M AIS, 34M LOF, 34M RDI, 8M AIS, 8M LOF, 8M RDI, 2M AIS, 2M LOF, 2M RDI
- 44.736 Mbps (DS3): LOS, LOF, OOF, AIS, Parity
- 139.264 Mbps (E4): LOS, AIS, LOF, RDI

Measurement

- 1.544 Mbps (DS1): AIS, yellow, idle, LOS, LOF, LSS
- 2.048 Mbps (E1): LOS, AIS, LOF, LOMF, RDI, and LSS
- 8.448 Mbps (E2): LOS, AIS, LOF, RDI, and LSS
- 34.368 Mbps (E3): LOS, AIS, LOF, RDI, and LSS
- 44.736 Mbps (DS3): LOS, LOF, OOF, AIS, Parity, LSS
- 139.264 Mbps (E4): LOS, AIS, LOF, RDI
- Modes: Continuous (manual), Count (0.1, 1, 10, 100 seconds)

Measurement Functions

Test Results

Error count, ES, %ES, SES, %SES, UAS, %UAS, EFS, %EFS, AS, %AS, and rate for all events: errors, alarms and pointer events

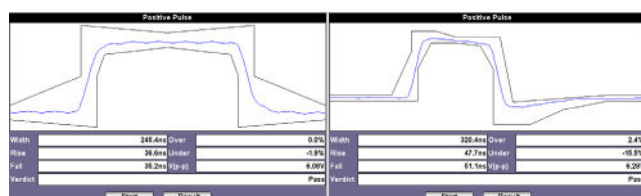
Performance Analysis

Measurements according to:

- ITU-T G.821: ES, EFS, SES and UAS with HRP 1% to 100%
- ITU-T G.826: EB, BBE, ES, EFS, SES, UAS; HRP of 1% to 100%
- In Service Measurement (ISM) using B1, B2, B3, FAS, CRC or Code (E1)
- Out of Service measurement (OOS) using bit errors (Test Sequence Error)
- ITU-T G.828: ES, EFS, SES, BBE, SEP, UAS with HRP 1% to 100%
- ITU-T G.829: ES, EFS, SES, BBE, UAS on RSOH (B1), MSOH (B2) or TSE
- ITU-T M.2100: ES, EFS, SES, UAS with HRP 1% to 100%
- User defined thresholds for Maintenance (MTCE) and Bringing into Service (BIS) objectives
- ITU-T M.2101: ES, EFS, SES, BBE, SEP, UAS with HRP 1% to 100%
- User defined thresholds for Maintenance (MTCE and Bringing into Service (BIS) objectives. In service measurements on both near and far ends of path using TSE, HP-BIP/P-BIP (B3), MS-BIP/L-BIP (B2), RS-BIP/S-BIP (B1) and LP-BIP/V-BIP (V5)

Pulse Mask Analysis*

PDH/DSn signals may fail pulse shape requirements due to interference, excessive cable length, improper impedance, open cable branches or poor transmitter characteristics. In such cases, G.703 Pulse Mask compliance verification is very useful in diagnosing related physical layer problems.



PDH

- Bit rates: 2.048 Mbps (E1) and 34.368 Mbps (E3)
- Conformance Mask: ITU-T G.703

DSn

- Bit rates: 1.544 Mbps (DS1) and 44.736 Mbps (DS3)
- Conformance Masks: ITU-T G.703, ANSI T1.102, T1.403, T1.404

Mode: Non-Intrusive

Display: Pulse shape graph with Conformance mask verification (Pass/Fail)

Parameters: Width, Rise/Fall time, Overshoot/Undershoot

E1/DS1 VF Measurements Option*

The Voice Frequency (VF) option is a basic diagnostic tool to install, verify and troubleshoot voice circuits. Digital to analog conversion tests are performed by inserting/measuring tones with user defined frequency and level on selected sub-rate channels.

Codec: μ -Law or A-Law

Programmable ABCD

- Manual edit AB, ABCD or ON-HOOK, OFF-HOOK, WINK for DS1, and IDLE, SEIZE for E1

Independent Time Slot channel selection for TX and RX

- E1 channel: 1 -15, 17-31, 1 to 31
- DS1 channel: 1 to 24

Tone Generation and Measurement

- Transmit Frequency: 50 to 3950 Hz
- Transmit Level: -60 to 3 dBm

Results

- AB/ABCD bits monitor
- View Received Data in selected T/S
- Measure signal frequency and level in selected timeslot

Additional Functions

Test Results Management

Local and remote web-based interface provides easy access and manipulation to OTN and Ethernet Test Results
Save, View, Rename, Lock and Delete functions

Export results to USB

- PDF, CSV, TXT formats

File Organizer

- Filtering per test result type

File Sorting

- By Name, Port, Test Type, Date, Size, Locked/Unlocked

Screen capture: Screen shots in .bmp format

Test Profile Management & Auto Scripting

Save and Recall test profiles to internal memory

Auto Script uses up to 10 saved test profiles to run batch tests

Remote Access and Control

Compatible with VeEX SCPI Remote Client (optional)

Compatible with multi-platform VNC® clients

Web-based VNC® server (no PC client required)

ReVeal RXTS Data Management

- Test results management
- Advanced report generation with html, pdf, or csv formats, combine test results, add logos and comments
- Test profiles management: Online or offline test profile creation, upload and download
- Remote Control

General

Power Consumption

Active 58 watts (max)

Environmental

Operating temperature 0 to 45°C (32 to 113°F)

Storage temperature -20 to 70°C (-4 to 158°F)

Humidity 5% to 90% non-condensing

Test Set Weight

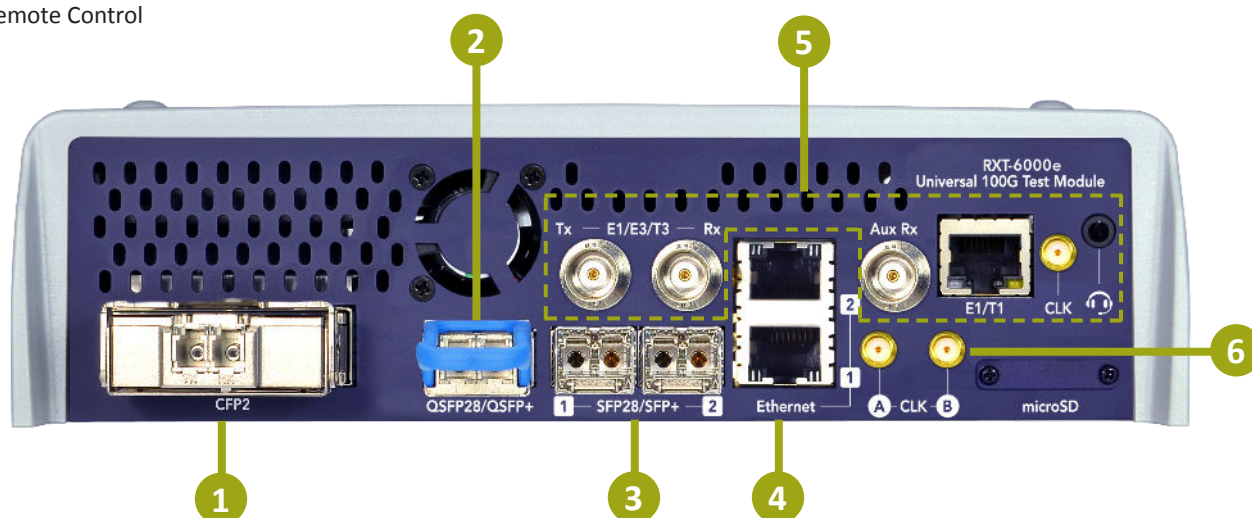
3.06 kg (6.7 lb)

RXT-6000e module 1.20 kg (2.6 lb)

RXT-1200 platform 1.32 kg (2.9 lb)

9-cell Li-ion battery 0.54 kg (1.2 lb)

ROHS compliant and Lead Free per Directive 2002/95/EC



- 1 CFP2:** 100GE, OTU4 (CFP4 or second QSFP28, with adapter*)
- 2 QSFP28/QSFP+:** 100GE, 50GE*, 40GE, OTU4, OTU3
- 3 Dual SFP28/SFP+:** 32/16/10/8/4/2/1G FC, 25*/10/1GE, 100Base-FX, OTU2/2e/1e/1, SONET/SDH, CPRI up to 24G*

- 4 Dual RJ45:** 10/100/1000Base-T
- 5 BNC, RJ48/Bantam:** Legacy electrical STM-1e/STS-3, STM-0/STS-1, E4, E3, E1, T3, T1 (Optional HW*)
- 6 SMA:** External Reference Clock Inputs

*Planned - consult factory for availability.